



**CONNECTING  
WITHOUT  
BOUNDARIES**

## **AVer MD330U**

Medical Grade PTZ Camera



AVer MD330U is specially designed and medically certified for Telemedicine with the IEC 60601-1-2 Medical Certification. The 30X optical zoom lens with 4K output resolution delivers superb image quality. AI Noise Reduction offers a face-to-face communication experience for patients and doctors. A first in the industry, the detachable camera head makes 360-degree angle close-up shooting and snapshots possible.



30X Optical Zoom



4K Output Resolution



Speedy Focus



Wide Angle PTZ



Handheld Camera Head



Short Working Distance



One-Click Pan-Tilt



One-Button Snapshot



One-Button Fill Light



Medical Certifications

## Revolutionary Detachable Head Design

The detachable camera head design is a true revolution in telemedicine – not only can the doctor make use of the motorized remote controlled PTZ functionality, the near-site medical assistant can also simply remove the camera from the base and easily give the doctor a clear view of any difficulties to capture area of interest.



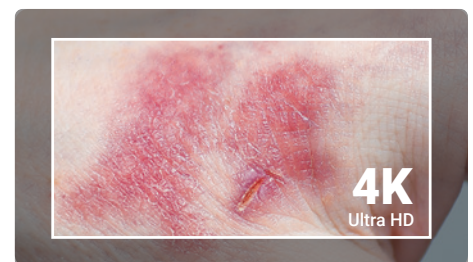
## Unparalleled 30X Optical Zoom Capability

The 30X optical zoom lens picks up even the smallest of details for the doctor to precisely diagnose, thanks to a superior autofocus, zoom speed and speedy camera movements.



## Outstanding 4K Resolution

The MD330U delivers ultra-clear 4K resolution imagery of the patient to the doctor and works together with the excellent 30X optical zoom to allow doctors to make accurate remote diagnoses.



## AI Acoustics

With an integrated speakerphone and microphone, the MD330U is equipped with an all-in-one audio system. AVer's in-house AI Noise Deduction technology makes communication smooth and telemedicine sessions stress free.



## Medical Grade Certification

The IEC60601-1-2 medical certification not only ensures stability and safety of the MD330U, but also guarantees the compatibility of other medical grade devices with the MD330U.



## Product Specifications

Camera		Speaker	
Image Sensor	1/2.8" 4K Exmor CMOS	Embedded Speaker	Yes
Effective Picture Elements	8 Megapixels	SPL	77 dB SPL (1W / 1m)
Output Resolutions	4K/30 (IP/UVC), 1080p/60, 1080p/59.94, 1080p/50, 1080p/30, 1080p/29.97, 1080p/25, 720p/60, 720p/59.94, 720p/50, 720p/30	Maximum SPL	90 dB SPL at 0.5 m
Minimum Illumination	0.7 lux (IRE50, F1.6, 30fps)	<b>Microphone</b>	
S/N Ratio	≥ 50 dB	Built-in Microphone	2 (Omnidirectional)
Gain	Auto, Manual	AI Noise Reduction	Yes
Shutter Speed	1/1 to 1/10,000 sec	Pickup Range	5 m
Exposure Control	Auto, Manual, Priority AE (Shutter, IRIS), BLC, WDR	Sensitivity	-33 dBFS
White Balance	Auto, Manual	Frequency Response	20 Hz to 20 KHz
Optical Zoom	30X	Maximum SPL	133 dB SPL at 0.5 m
Viewing Angles	DFOV : 75.5° (Wide) to 3.1° (Tele) HFOV : 68.0° (Wide) to 2.7° (Tele) VFOV : 41.7° (Wide) to 1.5° (Tele)	<b>Loop Recording</b>	
Focal Length	f = 4.3 mm (Wide) to 129 mm (Tele)	Resolution	Up to 4K
Aperture (Iris)	F = 1.6 (Wide) to 4.7 (Tele)	Length of Video	5 minutes
Minimum Working Distance	0.01 m (Wide), 1.2 m (Tele)	Recording Modes	Loop & continuous
Pan / Tilt Angles	Pan : ±170°, Tilt: +80° / -35°	Loop Mechanism	Wipe the oldest clip
Pan / Tilt Speed (Manual)	Pan : 0.1° to 100° / sec, Tilt: 0.1° to 100° / sec	<b>IP Streaming</b>	
Preset Speed	Pan : 200° / sec, Tilt: 200° / sec	Resolution	4K 30fps
Preset Positions	10 (IR), 256 (RS-232 / IP)	Network Video Compress Formats	H.264, H.265
Camera Control - Protocols	VISCA (RS-232 / IP), PELCO-D & PELCO-P (RS-232), CGI (IP)	Maximum Frame Rate	4K 30fps
Image Processing	Noise Reduction (2D / 3D), Flip, Mirror, WDR, BLC	Network Interface	10 / 100 / 1000 Base-T
Power Frequencies	50 Hz, 60 Hz	Multi-Stream Capability	2 (RTSP / Web Page), 4K 30fps (max.)
<b>Interface</b>		Network Protocols	IPv4, TCP, UDP, ARP, ICMP, IGMP, HTTP, DHCP, RTP / RTCP, RTSP, RTMP, VISCA over IP
Video Outputs	HDMI, IP, USB	<b>USB</b>	
Audio Outputs	HDMI, IP, USB	Connector	USB 3.0
<b>General</b>		Video Format	MJPEG · YUY2
Power Requirement	AC 100 - 240V to DC 12V / 3.34A	Audio Format	PCM
Power Consumption	36W	USB Video Class (UVC)	UVC 1.1
Dimensions (W x H x D)	168 x 205 x 126 mm	USB Audio Class (UAC)	UAC 1.0
Net Weight	1.95 kg	<b>Software Tools</b>	
Application	Indoor	IP Search and Configuration Tool	Support Windows® 7 or later
Tally Lamp	N / A	<b>Warranty</b>	
Security	Kensington Slot	Camera	3 Years
Remote Control	Infrared	Accessories	1 Year
Operating Conditions	Temperature : 0 °C to +35 °C; Humidity : 20% to 80%	<b>Package Contents</b>	
Storage Conditions	Temperature : -20 °C to +60 °C; Humidity : 20% to 95%	Camera, Remote Control, Power Adapter, Power Cord, 1/4"-20, L=7.5mm Screw (x2), USB 3.0 Type-B to A Cable (1.5m), On-Camera Lens Cable (Standard, 180 cm), Short Lens Cable (45 cm), Quick Start Guide	

\* Specifications may vary depending on location and are subject to change without notice.

## Product Appearance

Front



1. Camera Lens
2. Speaker
3. Microphone Array
4. LED Indicator
5. Mode Switch Button

Back



1. USB Type-A for Camera Connection
2. RJ45
3. USB 3.0 Type-B
4. HDMI
5. USB Type-A
6. microSD Card Slot
7. RS-232
8. DC 12V
9. Kensington Slot

Detachable Camera Head



1. Snapshot Button
2. Fill Light Button



©2026 AVer Information Inc. All rights reserved.  
All brand names and logos are trademarks of their respective companies.

Distributor/Dealer