



Fully Digital Conference System

User Manual

TS-0315

TS-0315A

Before using this system, please read this manual carefully

Notification

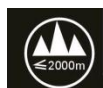


WARNING

To ensure the reliability of the equipment and the safety of personnel, please observe the following when installing, using and maintaining:

- If any of the following conditions are found, please immediately turn off the power, plug out and quickly contact your nearest dealer. Do not continue using this unit, which may cause a fire or electric shock.
 - If you find smoke or have a strange taste from the machine.
 - If water or metal falls into the machine.
 - If the unit is dropped or the case is damaged.
 - If the wire is damaged (wire core exposure, broken wire, etc.).
- If the machine contains high-pressure parts, in order to avoid the fire or electric shock, absolutely don't open the case, if any questions please inform your nearest dealer.
- Do not place cups, bowls, vases or metal and other water-filled substances on the unit. Serious spilled liquid may cause a fire or electric shock.
- Never expose the unit to rain and any moisture or water, which may cause electric shock or fire.
- Do not place metal objects or flammable materials from the vents on the machine cover, nor place coins, which may cause fire or electric shock.
- Do not place heavy objects on the unit to avoid personal injury or property damage when the unit is slipping.
- Make sure that the volume is turned on at the beginning of the boot, and the high volume of the boot may cause hearing problems.
- Make sure that the volume is turned on at the beginning of the boot, and the high volume of the boot may cause hearing problems.
- For long-term accumulation of dust to be cleaned, please inform your dealer to regularly clean the machine, so as to avoid damage to the machine or cause a fire.
- The battery must be replaced with the same type of product and the correct installation should be made in order to avoid electrical damage and explosion hazard.
- The product is a Class III device. The device must be well connected to ground. The power plug must be connected to a power outlet with a grounding device to ensure that the equipment is fully grounded.

- This product uses a power plug or appliance input socket as a disconnecting device with the power supply, and must be disconnected if necessary for safety reasons.



- This equipment is only suitable for safe use at altitudes under 2000 meters.

Precautions

1. The installation environment

When installing the unit, in order to ensure the normal cooling of the host, should avoid the poor ventilation of the place or high temperature environment, to avoid direct sunlight.

Recommend to install cabinet or other well-ventilated place indoor. If you use the machine in the outdoors, please pay attention to waterproof, moisture, lightning protection measures.

Avoid installing in a violent place of vibration; do not place other equipment on the machine.

2. To avoid electric shock and fire

Do not touch the hands and the source with wet hands

Do not spill liquid on the machine, so as to avoid short-circuit or fire inside the machine.

Do not place other equipment directly on the top of the unit.

Non-professional service personnel Do not disassemble the unit yourself to avoid damage and electric shock.

3. Transport and handling

The packaging of the machine is designed and tested to ensure that the host will not be accidentally damaged during transport. It is best to use the original packaging when handling the unit.

Do not move the host device between the place or cold or over hot to avoid condensation inside the machine, affecting equipment life.

4. Please follow the warning instructions on this product, the warning signs on behalf of:

	Applicable to 2000 meters above sea level and below safe use
	Safe use only in non-tropical climates

5. Agreement

Please strictly follow the instructions in this manual. The software, hardware and appearance of this product will be upgraded and updated continually. The above changes will be made without notice.

Non-professional maintenance personnel, do not remove the product, to avoid damage and electric shock.

Content

1. Product Introduction.....	- 4 -
2. Product Description.....	- 4 -
2.1 FEATURES.....	- 4 -
2.2 PRODUCT INTERFACE INTRODUCTION.....	- 5 -
2.3 SPECIFICATION.....	- 6 -
3. Connection Diagram.....	- 7 -
4. TS-0315/TS-0315A Operating Instruction.....	- 8 -
4.1 UNIT TYPE.....	- 8 -
4.2 MEETING MANAGEMENT.....	- 8 -
4.3 CHECK IN.....	- 8 -
4.4 FIRE ALARM.....	- 8 -
4.5 TIMED SPEECH AND SPEECH TIMING (NO SCREEN TO DISPLAY, CAN ONLY BE VIEWED ON PC).....	- 8 -
4.6 AUDIO ADJUSTMENT.....	- 9 -
4.7 UNIT ID AND RELATED IP ADDRESS.....	- 9 -
4.8 THE UNIT SUPPORTS ICMP PROTOCOL AND CAN PERFORM PING PACKET RELATED OPERATIONS.....	- 9 -
4.9 UNIT WEB PAGE LOGIN.....	- 9 -
4.10 UNIT ID NUMBER SETTING ON WEB.....	- 10 -
4.11 VOICE CONTROL FUNCTION SETTING IN WEB PAGE.....	- 10 -
4.12 LANGUAGE SWITCHING FUNCTION SETTING IN WEB PAGE.....	- 11 -
4.13 CHECK-IN FUNCTION SETTING IN WEB PAGE.....	- 11 -
4.14 UNIT AUDIO PARAMETER SETTING IN WEB PAGE.....	- 11 -
4.15 UNIT BASIC INFORMATION VIEWING IN WEB PAGE.....	- 12 -
5. Use Precaution.....	- 13 -
6. Conference PC software instruction.....	- 14 -

1. Product Introduction

This product is the third-generation technically simple microphone with new solution architecture, compact design, exquisite and beautiful. Different from the traditional six-pin aviation cable, it comes with a 2-meter network cable, which greatly facilitates the construction and wiring.

2. Product Description

TS-0315/TS-0315A Economic Microphone Conference Unit



TS-0315 (Chairman unit)

TS-0315A (Delegate unit)

2.1 Features

1. Digital transmission link, connected to the conference controller cascade port for power supply through network cable, uncompressed audio transmission technology, 48K sampling rate, 80Hz-16KHz bandwidth, perfect sound quality.
2. Capacitive touch keys are adopted to ensure no key tapping noise and a good environment of the venue.
3. The unit supports microphone control and voice control function by PC software.
4. The chairman unit has the priority to turn off the speech of the delegate unit.
5. The unit has TCP/IP protocol cluster, and supports ICMP, HTTP, UDP, TCP, IGMP and other protocols.
6. The unit supports PING package function.
7. The unit has an independent web control page, which supports adjustment of microphone ID number, microphone sensitivity, and other parameters.
8. The unit has a voice control function, and the voice control sensitivity is adjustable.
9. The unit supports check-in function. You can also disable and control the unit check-in, and other functions through the PC software.

10. The unit supports firmware upgrade function on the web page.
11. The unit supports the IP address sniffing function, and the ID number, IP address, MAC address and other parameters of the unknown unit can be found through the PC tool.

2.2 Product Interface Introduction

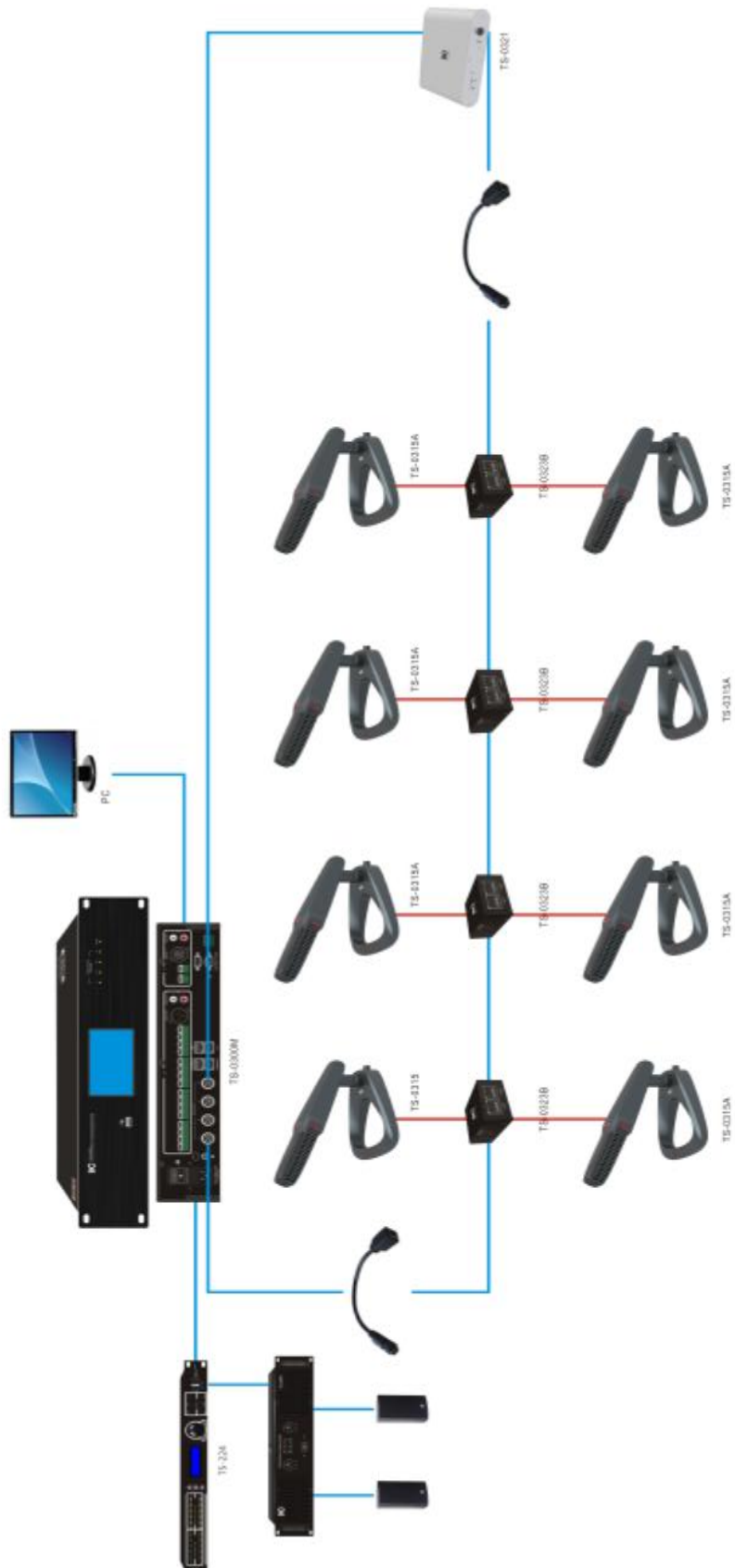


1. Microphone pole light;
2. Chairman unit power button;
3. Chairman unit priority button (VIP button);
4. Delegate unit power button.

2.3 Specification

Model	TS-0315/TS-0315A
Microphone type	Electret capacitive
Microphone directivity	Cardioid
Frequency response	80Hz~16KHz
Microphone input impedance	1K Ω
Sensitivity	-37 \pm 1dB (0dB=1V/Pa,at 1KHz)
Maximum SPL	120dB(THD>3%)
SNR	>80dB(A)
Crosstalk	>70dB
Dynamic range	>80dB
THD	<0.1%
Maximum power consumption	2W
Power supply	Conference controller power supply
Color	Space gray
Check-in function	Button check in
Dimension (LxWxH)	99*114.4*18.5mm (excluding microphone pole length)
Mic pole length and color	180mm space gray
Installation method	Desktop
Weight	0.62Kg

3. Connection Diagram



4. TS-0315/TS-0315A Operating Instruction

4.1 Unit type

- (1) The chairman unit has microphone button and priority button, which can switch the microphone, perform priority, check in and other operations.
- (2) The delegate unit has microphone button and no priority button, which can switch the microphone and check in.

4.2 Meeting management

- (1) Microphone switching is controlled by the conference management, and its authority is configured by the conference controller. Refer to the conference mode description of controller for use logic.
- (2) Press the priority button of chairman unit to turn off the microphone of all delegate units, and this chairman unit turns on the microphone.

4.3 Check in

- (1) Initiate check-in through PC software. At this time, you can press the microphone button of the unit to check in, and the result will be displayed on the PC software after checking in.
- (2) The check-in function of unit can be disabled or enabled through PC software.

4.4 Fire alarm

When the controller sends fire alarm, the red light on the microphone pole of the unit will flash until the controller cancels the fire alarm. And the unit returns to the state before the alarm.

4.5 Timed speech and speech timing (No screen to display, can only be viewed on PC)

This function needs to be controlled by the conference PC software. Please refer to the PC instructions for details. For timed speaking, the PC will issue the time for the timed speech, the unit will count down and display the remaining speech time, and when the time is up, the microphone will be automatically turned off. The timed speech is only valid for delegate unit; For speaking timing, the PC specifies the unit to perform the speaking timing, and the speaking time will be displayed on the PC.

4.6 Audio adjustment

This function needs to be controlled by the conference PC software. Please refer to the PC instructions for details.

4.7 Unit ID and related IP address

(1) Use the current unit ID number as the unit IP address. The first two bytes of the IP address are fixed at 172.16; the last two bytes are the high 8 bits and the low 8 bits of the ID number.

(2) For example: if the ID number is 1, the IP address is 172.16.0.1; if the ID number is 100, the IP address is 172.16.0.100; if the ID number is 300, the IP address is 172.16.1.44; if the ID number is 4090, then the IP address is 172.16.15.250;

(3) If you forget the ID number, you can find the ID number and IP address of the current microphone through provided IP address view tool in PC.

4.8 The unit supports ICMP protocol and can perform PING packet related operations

The PC calls out the CMD and can ping the IP address of the corresponding unit.

4.9 Unit web page login

(1) Set the PC to the same network segment as the unit;

(2) Please refer to the description in 4.14 for the unit IP address;

(3) The subnet mask is 255.255.0.0;

(4) All settings in the web page are effective after "Submit information".

UNIT BASIC SETTING

ID number

–

11

+

Voice mode sensitivity

–

60

+

Voice mode mute interval

–

30

+

Language

中文

English

Русский

Français

Sign

Disable

Enable

Submit

Reset

UNIT AUDIO SETTING

Mic sensitivity

0dB

▼

Submit

Reset

UNIT EQUALIZER SETTING

80 ~ 175 HZ

105 HZ

▼

0 dB

▼

230 ~ 500 HZ

385 HZ

▼

2 dB

▼

650 ~ 1400 HZ

850 HZ

▼

1 dB

▼

1.8 ~ 4.1 KHZ

2400 HZ

▼

0 dB

▼

5.3 ~ 11.7 KHZ

6900 HZ

▼

0 dB

▼

Submit

Reset

4.10 Unit ID number setting on Web

- (1) Set the unit ID, the IP address of the unit will change after setting.
- (2) After setting, if parameter setting of the web page is required, login and set according to the IP address bound to the new ID.

4.11 Voice control function setting in web page

- (1) Set the open microphone sensitivity of the voice control mode
- (2) Set the no-signal off time of the voice control mode (chairman unit will not be affected)

4.12 Language switching function setting in web page

(1) Chinese, English, Russian and French switching. (TS-0315/0315A does not have screen, so this function does not work.)

4.13 Check-in function setting in web page

This function needs to be set in non-check-in mode, which is usually set up before the meeting.

UNIT BASIC SETTING

ID number

—

11

+

Voice mode sensitivity

—

60

+

Voice mode mute interval

—

30

+

Language

中文

English

Русский

Français

Sign

Disable

Enable

Submit

Reset

4.14 Unit audio parameter setting in web page

(1) Microphone sensitivity.

(2) Microphone EQ. (This unit has no EQ adjustment function)

UNIT AUDIO SETTING

Mic sensitivity

0dB

▼

Submit

Reset

UNIT EQUALIZER SETTING

80 ~ 175 HZ

105 HZ

▼

0 dB

▼

230 ~ 500 HZ

385 HZ

▼

2 dB

▼

650 ~ 1400 HZ

850 HZ

▼

1 dB

▼

1.8 ~ 4.1 KHZ

2400 HZ

▼

0 dB

▼

5.3 ~ 11.7 KHZ

6900 HZ

▼

0 dB

▼

Submit

Reset

4.15 Unit basic information viewing in web page

- (1) Version number;
- (2) MAC address;
- (3) Unit type.

UNIT BASIC INFORMATION	
Kernel version	V1.1.0 H1110BA03
Application version	V1.4 M0908BAH3
MAC address	9C:9C:1F:1E:CC:DF
Unit type	Delegate

5. Use Precaution

Note: The network port of the TS-0315 microphone unit does not have POE power supply, and can only be powered by connecting to the conference controller. It is forbidden to connect to POE switch.

Correct steps: firstly connect the TS-0315 to the TS-0300M conference controller through the six-pin network port extension cable TS-003DRM, connect the computer to the extension port of the conference controller, and then open the PC and Unit Scanning Tool to scan the current device ID number, IP address and other information.

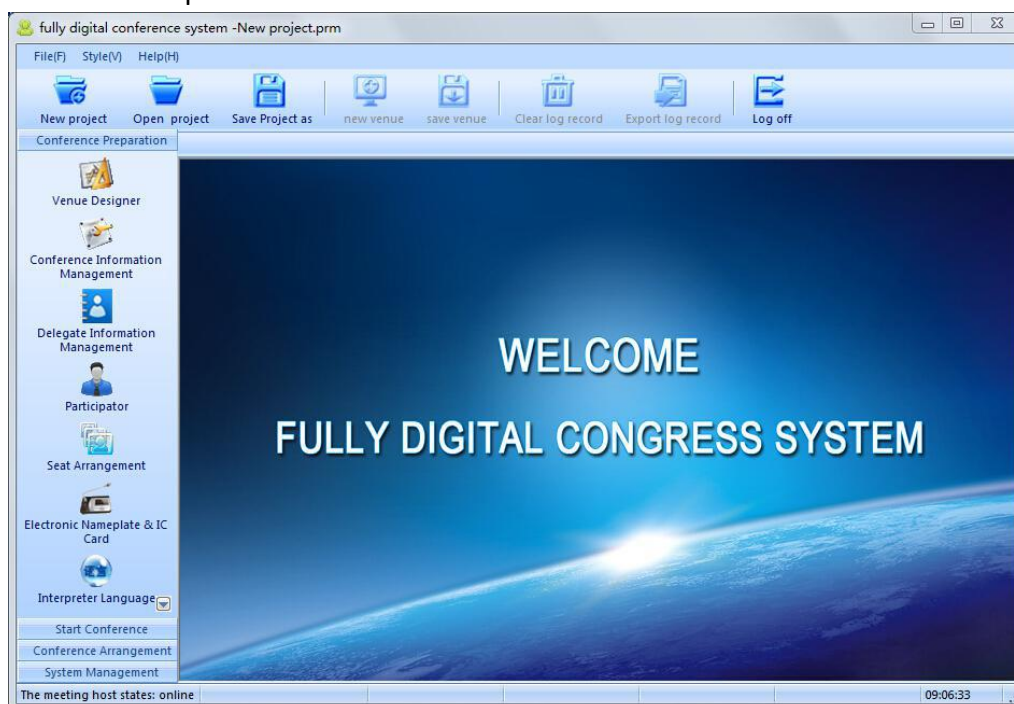
Disclaimer:

- 1. The connection between TS-0315 and TS-0315A microphones must use our supported network cable, otherwise all the consequences will be borne by yourself.**
- 2. The network port is prohibited from connecting to other devices, otherwise all the consequences will be borne by yourself.**

6. Conference PC software instruction

Digital Conference System PC control software is powerful, easy to operate, including most of the functionality needed in meeting; it is designed according to meeting procedure sequence. Users only need to operate follow the left column.

Below software interface, there is a column to display the current conference host status, interpreter unit quantity, chairman unit quantity, delegate unit quantity, current computer time and other information. If there is microphone being plugged, lost connection, the quantity change will prompt up to alert the operator.



System Management Interface introduction: The information displayed on the left of System Management Interface is the four functional modules, including preparation before meeting, starting meeting, sorting material after meeting and system management.

Each of these modules also contains several small modules.

Preparations before meeting includes the sub-modules: venue design, conference management, personnel management, delegates, staff qualifying, electronic nameplate and sign cards, interpreter unit languages and projection edition.

Starting meeting includes the sub-modules: sign in control, agenda control, conference control;

Sorting material after meeting includes the sub-modules: data reporting, logging.

System management includes the sub-modules: user management, host configuration.

Due to the limited space in this manual, the specific operation of the digital conference system software instructions here is not mentioned in details, please refer to "ITC Digital Conference System Software User Manual".

Fully Digital Conference System

