



**CARING
WITHOUT LIMITS**

AVer MD330UI

Medical Grade PTZ Camera 





AVer MD330UI is specially designed and medically certified for Telemedicine with the IEC 60601-1-2 Medical Certification. The 30X optical zoom lens with 4K output resolution delivers superb image quality. AI Noise Reduction offers a face-to-face communication experience for patients and doctors. A first in the industry, the detachable camera head makes 360-degree angle close-up shooting and snapshots possible. The MD330UI is available for infrared night view, delivering care 24/7.



30X Optical Zoom



4K Output Resolution



Speedy Focus



Wide Angle PTZ



Handheld Camera Head



Short Working Distance



One-Click Pan-Tilt



One-Button Snapshot



IR for Night View



Medical Certifications

Revolutionary Detachable Head Design

The detachable camera head design is a true revolution in telemedicine – not only can the doctor make use of the motorized remote controlled PTZ functionality, the near-site medical assistant can also simply remove the camera from the base and easily give the doctor a clear view of any difficulties to capture area of interest.



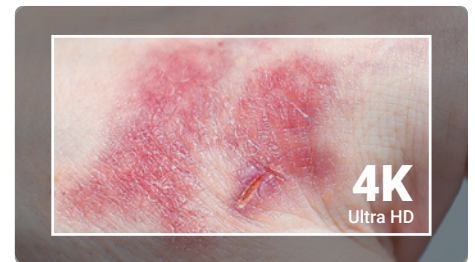
Unparalleled 30X Optical Zoom Capability

The 30X optical zoom lens picks up even the smallest of details for the doctor to precisely diagnose, thanks to a superior autofocus, zoom speed and speedy camera movements.



Outstanding 4K Resolution

The MD330UI delivers ultra-clear 4K resolution imagery of the patient to the doctor and works together with the excellent 30X optical zoom to allow doctors to make accurate remote diagnoses.



AI Acoustics

With an integrated speakerphone and microphone, the MD330UI is equipped with an all-in-one audio system. AVer's in-house AI Noise Deduction technology makes communication smooth and telemedicine sessions stress free.



Medical Grade Certification

The IEC 60601-1-2 medical certification not only ensures stability and safety of the MD330UI, but also guarantees the compatibility of other medical grade devices with the MD330UI.



Product Specifications

Camera		Speaker	
Image Sensor	1/2.8" 4K Exmor CMOS	Embedded Speaker	Yes
Effective Picture Elements	8 Megapixels	SPL	77 dB SPL (1W / 1m)
Output Resolutions	4K/30 (IP/UVC), 1080p/60, 1080p/59.94, 1080p/50, 1080p/30, 1080p/29.97, 1080p/25, 720p/60, 720p/59.94, 720p/50, 720p/30	Maximum SPL	90 dB SPL at 0.5 m
		Microphone	
Minimum Illumination	0.7 lux (IRE50, F1.6, 30fps)	Built-in Microphone	2 (Omnidirectional)
S/N Ratio	≥ 50 dB	AI Noise Reduction	Yes
Gain	Auto, Manual	Pickup Range	5 m
Shutter Speed	1/1 to 1/10,000 sec	Sensitivity	-33 dBFS
Exposure Control	Auto, Manual, Priority AE (Shutter, IRIS), BLC, WDR	Frequency Response	20 Hz to 20 KHz
White Balance	Auto, Manual	Maximum SPL	133 dB SPL at 0.5 m
Optical Zoom	30X	Loop Recording	
Viewing Angles	DFOV : 75.5° (Wide) to 3.1° (Tele) HFOV : 68.0° (Wide) to 2.7° (Tele) VFOV : 41.7° (Wide) to 1.5° (Tele)	Resolution	Up to 4K
		Length of Video	5 minutes
		Recording Modes	Loop & continuous
Focal Length	f = 4.3 mm (Wide) to 129 mm (Tele)	Loop Mechanism	Wipe the oldest clip
Aperture (Iris)	F = 1.6 (Wide) to 4.7 (Tele)	IP Streaming	
Minimum Working Distance	0.01 m (Wide), 1.2 m (Tele)	Resolution	4K 30fps
Pan / Tilt Angles	Pan : ±170°, Tilt: +80° / -35°	Network Video Compress Formats	H.264, H.265
Pan / Tilt Speed (Manual)	Pan : 0.1° to 100° / sec, Tilt: 0.1° to 100° / sec	Maximum Frame Rate	4K 30fps
Preset Speed	Pan : 200° / sec, Tilt: 200° / sec	Network Interface	10 / 100 / 1000 Base-T
Preset Positions	10 (IR), 256 (RS-232 / IP)	Multi-Stream Capability	2 (RTSP / Web Page), 4K 30fps (max.)
Camera Control - Protocols	VISCA (RS-232 / IP), CGI (IP)	Network Protocols	IPv4, TCP, UDP, ARP, ICMP, IGMP, HTTP, DHCP, RTP / RTCP, RTSP, RTMP, VISCA over IP
Image Processing	Noise Reduction (2D / 3D), Flip, Mirror, WDR, BLC	USB	
Power Frequencies	50 Hz, 60 Hz	Connector	USB 3.0
Interface		Video Format	MJPEG、YUY2
Video Outputs	HDMI, IP, USB	Audio Format	PCM
Audio Outputs	HDMI, IP, USB	USB Video Class (UVC)	UVC 1.1
General		USB Audio Class (UAC)	UAC 1.0
Power Requirement	AC 100 - 240V to DC 12V / 3.34A	Software Tools	
Power Consumption	36W	IP Search and Configuration Tool	Support Windows® 7 or later
Dimensions (W x H x D)	168 x 205 x 126 mm	Warranty	
Net Weight	1.95 kg	Camera	3 Years
Application	Indoor	Accessories	1 Year
Tally Lamp	N / A	Package Contents	
Security	Kensington Slot	Camera, Remote Control, Power Adapter, Power Cord, 1/4"-20, L=7.5mm Screw (x2), USB 3.0 Type-B to A Cable (1.5m), On-Camera Lens Cable (Standard, 180 cm), Short Lens Cable (45 cm), Quick Start Guide	
Remote Control	Infrared		
Operating Conditions	Temperature : 0 °C to +35 °C; Humidity : 20% to 80%		
Storage Conditions	Temperature : -20 °C to +60 °C; Humidity : 20% to 95%		

* Specifications may vary depending on location and are subject to change without notice.

Product Appearance

Front



1. Camera Lens
2. Speaker
3. Microphone Array
4. LED Indicator
5. Mode Switch Button

Back



1. USB Type-A for Camera Connection
2. RJ45
3. USB 3.0 Type-B
4. HDMI
5. USB Type-A
6. microSD Card Slot
7. RS-232
8. DC 12V
9. Kensington Slot

Detachable Camera Head



1. Snapshot Button



©2026 AVer Information Inc. All rights reserved.
All brand names and logos are trademarks of their respective companies.

Distributor/Dealer